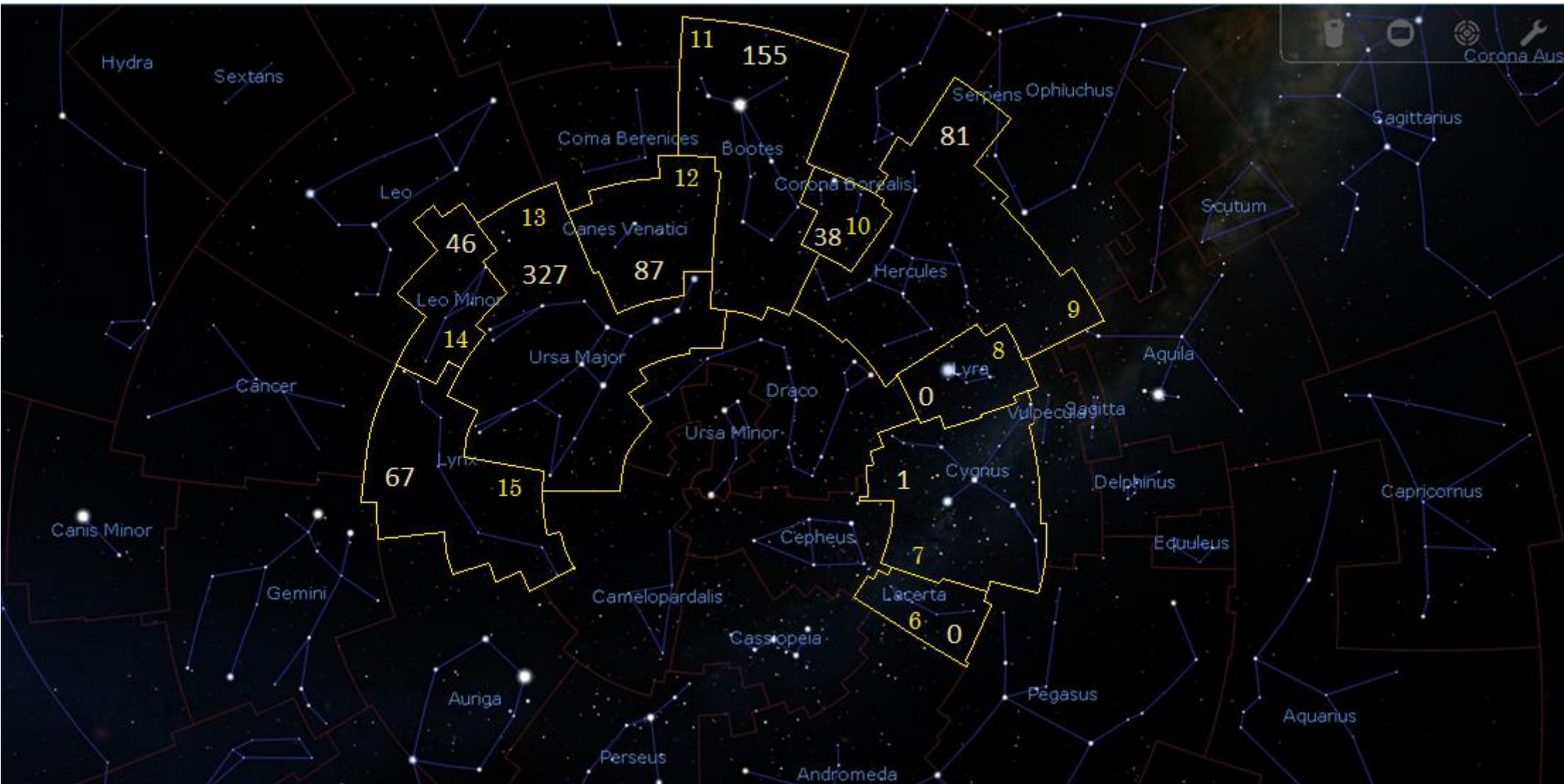


The Distribution of Galaxy Clusters Across the Constellations

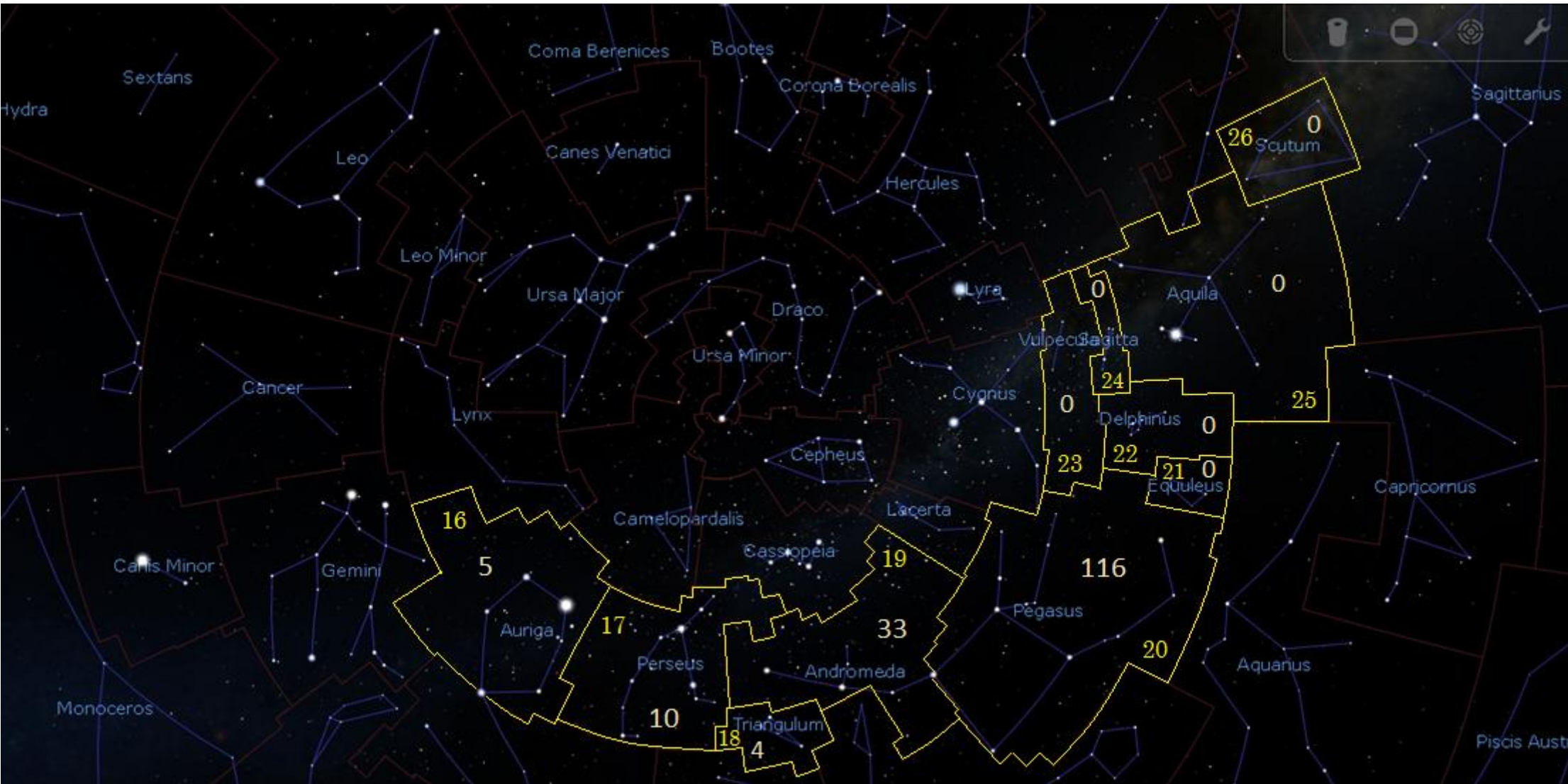
Produced by Anthony van Bick using Stellarium



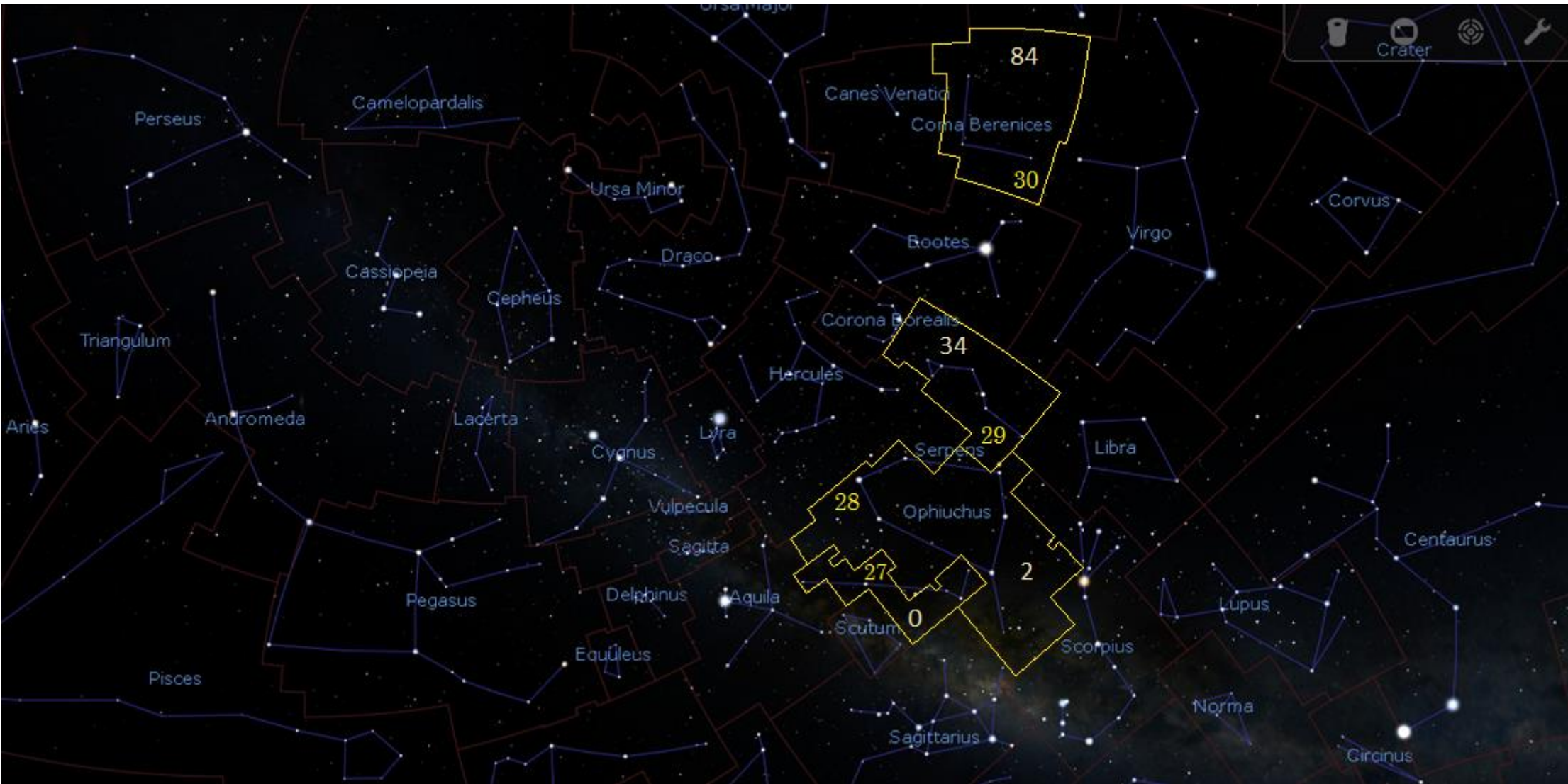
1. Ursa Minor	54 (galaxy clusters)
2. Draco	150
3. Camelopardalis	63
4. Cassiopeia	1
5. Cepheus	1



6. Lacerta	0	10. Corona Borealis	38	13. Ursa Major	327
7. Cygnus	1	11. Bootes	155	14. Leo Minor	46
8. Lyra	0	12. Canes Venatici	87	15. Lynx	67
9. Hercules	81				

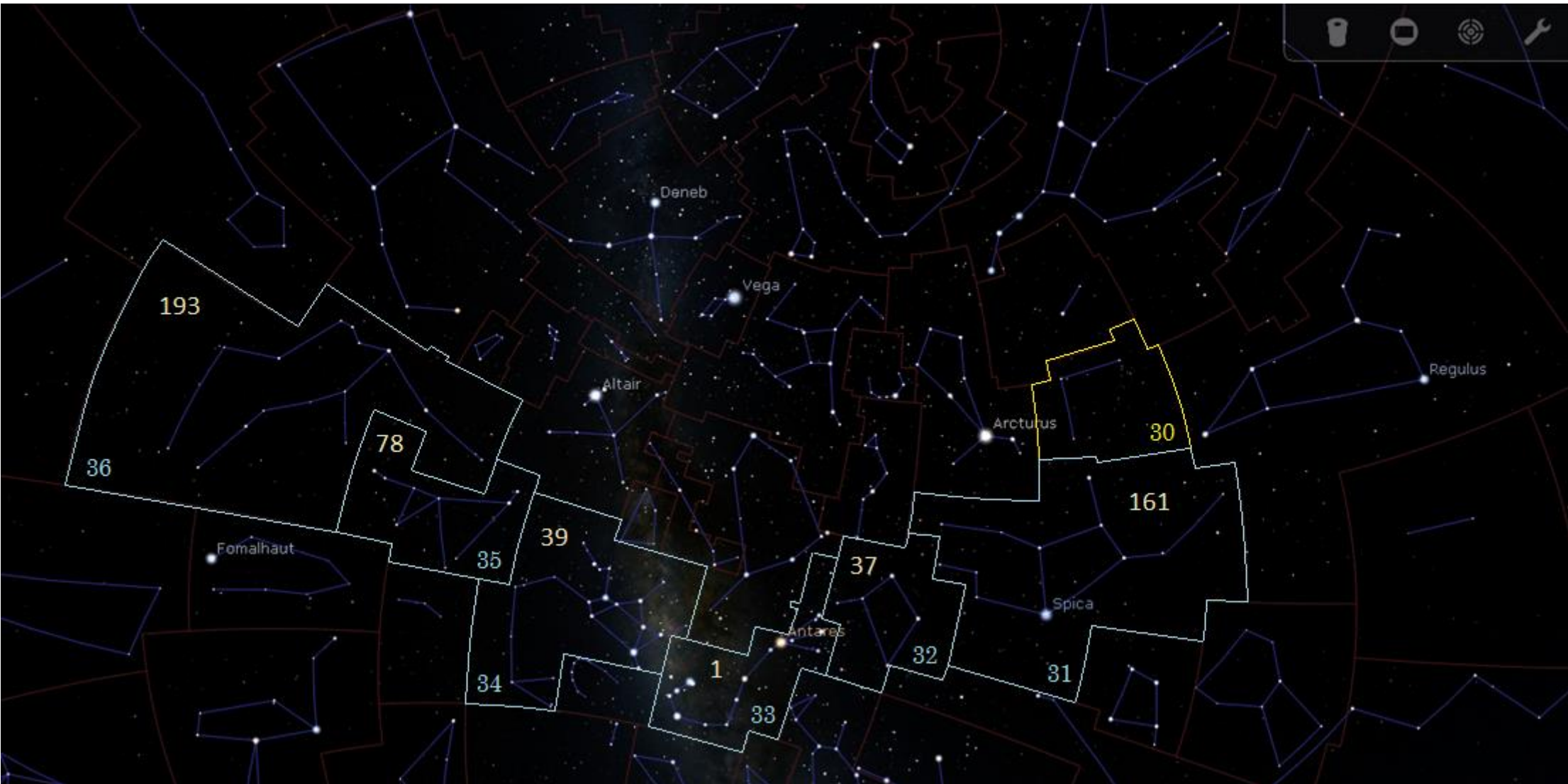


16. Auriga	5	19. Andromeda	33	22. Delphinus	0	25. Aquila	0
17. Perseus	10	20. Pegasus	116	23. Vulpecula	0	26. Scutum	0
18. Triangulum	4	21. Equuleus	0	24. Sagitta	0		



27. Serpens (Cauda)	0
28. Ophiuchus	2
29. Serpens (Caput)	34
30. Coma Berenices	84

Zodiacal Constellations



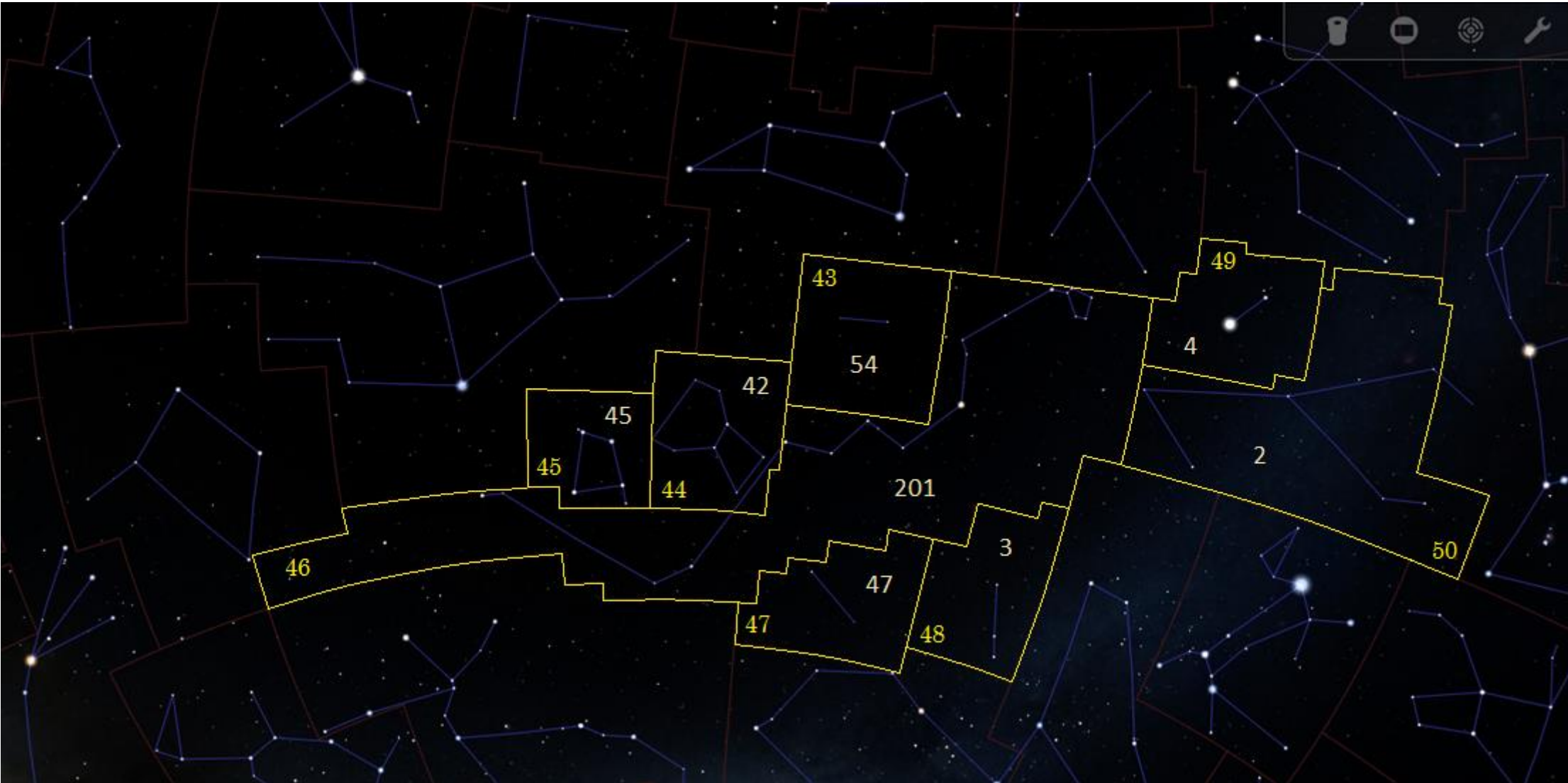
31. Virgo	161	34. Sagittarius	39
32. Libra	37	35. Capricornus	78
33. Scorpius	1	36. Aquarius	193

Zodiacal Constellations (Continued)



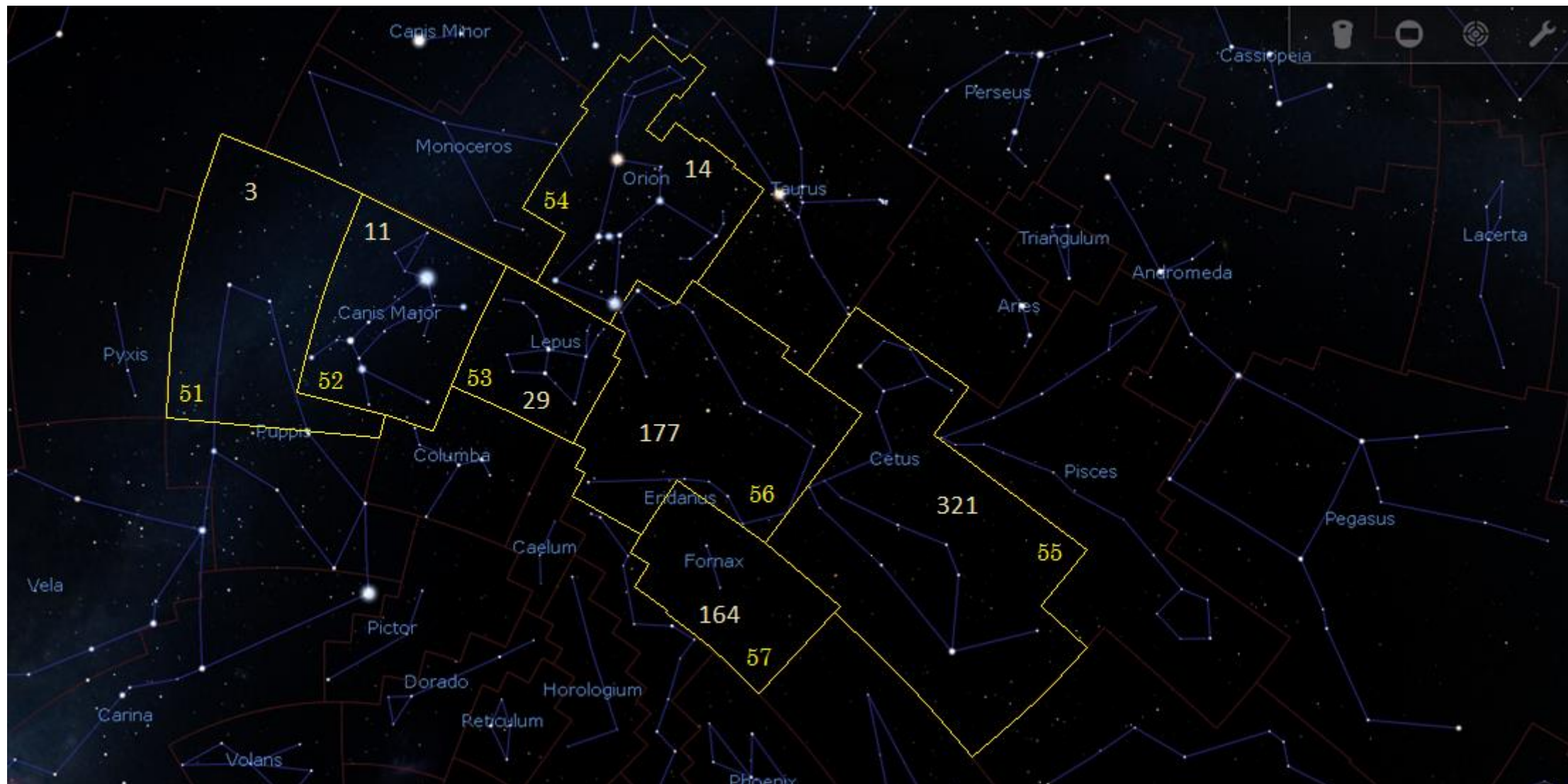
37. Pisces	119	40. Gemini	10
38. Aries	26	41. Cancer	44
39. Taurus	17	42. Leo	191

The Remaining 18 Middle Constellations



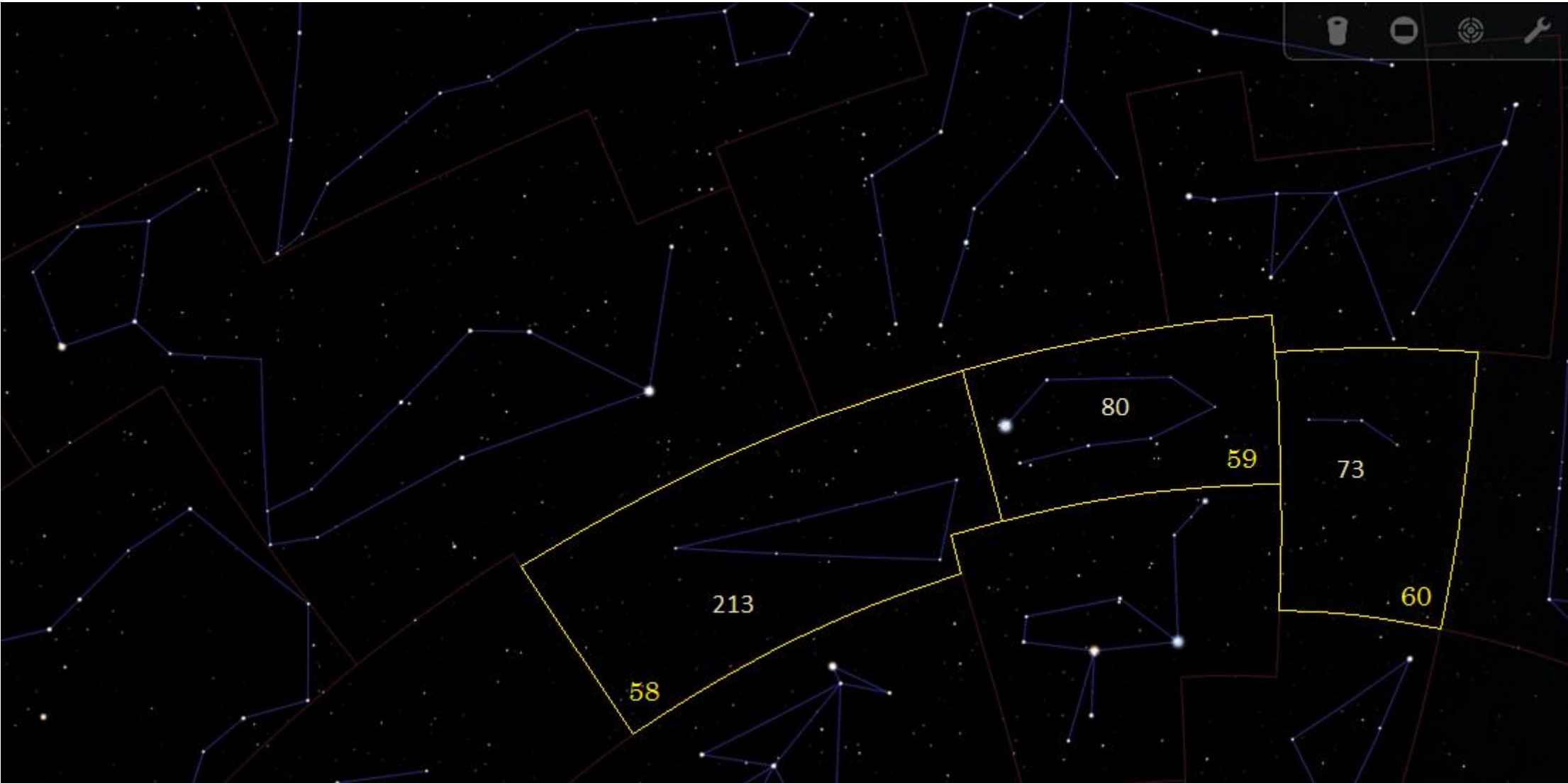
43. Sextans	54	46. Hydra	201	49. Canis Minor	4
44. Crater	42	47. Antlia	47	50. Monoceros	2
45. Corvus	45	48. Pyxis	3		

The Remaining 18 Middle Constellations (Continued)



51. Puppis (Borealis)	3	55. Cetus	321
52. Canis Major	11	56. Eridanus (Borealis)	177
53. Lepus	29	57. Fornax	164
54. Orion	14		

The Remaining 18 Middle Constellations (Continued)



58. Sculptor	213
59. Piscis Austrinus	80
60. Microscopium	73